

PARALLEL SESSION 1D

Nightlife intelligence

Smells like teen spirit: nightlife and (mis)use of drugs among youth in the coastal area of Slovenia

Mateja Sedmak and Ana Kralj
University of Primorska, Slovenia

In 2004, Science and Research Centre of Koper operating within the University of Primorska carried out a research study 'Youth and (Mis)use of Drugs'. The project was financed by all three municipalities of the Slovenian coastal area – Municipality of Koper, Municipality of Izola and Municipality of Piran. The survey was carried out among 12 high schools and 18 primary schools; the sample included youth population aged 13 and 17 (N = 548). In this paper some of the findings of the research study will be presented. The focal points will be:

- youth and night life (how often do they go out, when are they supposed to come home during weekdays/during weekends);
- attitudes toward (il)legal drugs;
- rates of (il)legal drug use among youth;
- reasons for the use of (il)legal drugs;
- possible interconnections between night life and risk-taking behaviour.

The presentation will include the analysis of significant differences in answering regarding demographic variables (sex, age, place of living), and differences concerning some important socio-demographic variables (such as family status, education of parents, school success and degree of personal happiness, as well as family happiness).

**Club Health 2006 - The 4th International
Conference on Nightlife, Substance Use and
Related Health Issues**

Piran, 20th – 22nd September, 2006

**“Smells Like Teen Spirit: Nightlife and
(Mis)use of Drugs Among Youth in the
Coastal Area of Slovenia”**

Mateja Sedmak, Ph.D. (University of Primorska, Science and Research Centre of Koper)
Ana Kralj (University of Primorska, Science and Research Centre of Koper)

University of Primorska
Science and Research Centre of Koper
Garibaldijeva 1, SI-6000 Koper
www.zrs-kp.si

RESEARCH PROJECT
“The Use of Drugs in Slovenian Coastal Area: Situation Analysis and Strategic Guidelines”

PROJECT DURATION:
2004 – 2006

RESEARCH GROUP:
Mateja Sedmak, Ph.D.
Ljubica Kordeš
Ana Kralj
Blaž Simčič

FINANCERS:
Municipality of Koper
Municipality of Izola
Municipality of Piran

RESEARCH DATA:

- The research study »The Use of Drugs in Slovenian Coastal Area: Situation Analysis and Strategic Guidelines« was carried out in 2004.
- The survey was carried out among all the primary schools and high schools in Slovenian coastal area (i.e. 18 primary schools and 12 high schools)
- The sample included youth population aged 13 (7th grade of primary school) and 17 (3rd year of high school). The total number of respondents was 548.
- The respondents were answering to the questionnaire individually; the completed questionnaires were afterwards discarded in a box, therefore the anonymity of the respondents was assured.

The primary objectives of the survey were to find out:

- attitudes towards (il)legal drugs among youth;
- rates of (il)legal drug use among youth;
- the most popular drugs among youth;
- the variety of possibilities for organised leisure activities;
- satisfaction with leisure activities on offer;
- possible interconnections between an active engagement in leisure time activities and risk behaviour;
- differences in answering regarding demographic variables (sex, age, place of living), and differences concerning some important socio-demographic variables (such as family status, education of parents, school success and degree of personal happiness, as well as family happiness)

The focal points of this presentation are:

- youth and the night life (how often do they go out, when are they supposed to come home during weekdays/during weekends);
- attitudes toward (il)legal drugs;
- rates of (il)legal drug use among youth;
- self-defined reasons for the use of (il)legal drugs;
- possible interconnections between night life and risk-taking behaviour.

Presentation of the sample:

Table 1: Respondents by age

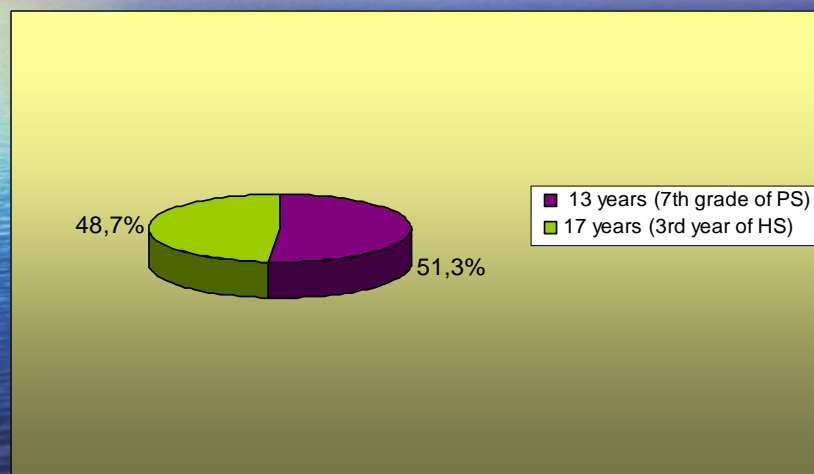
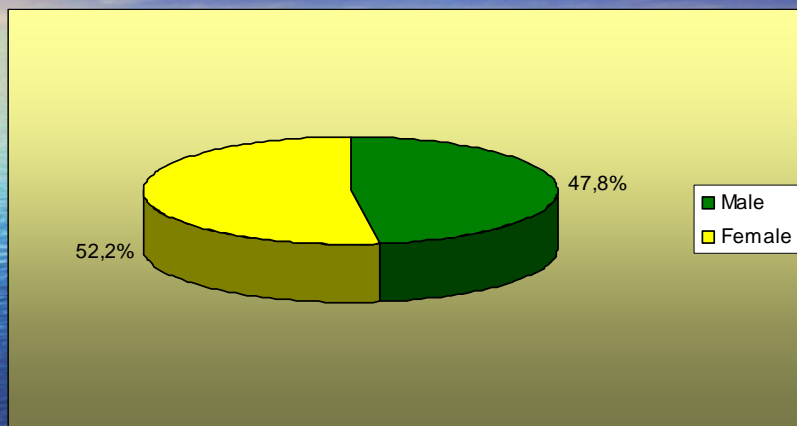


Table 2: Respondents by gender



I. Youth and the Nightlife

Table 3: Share of youth visiting night clubs and disco clubs by night (in %)

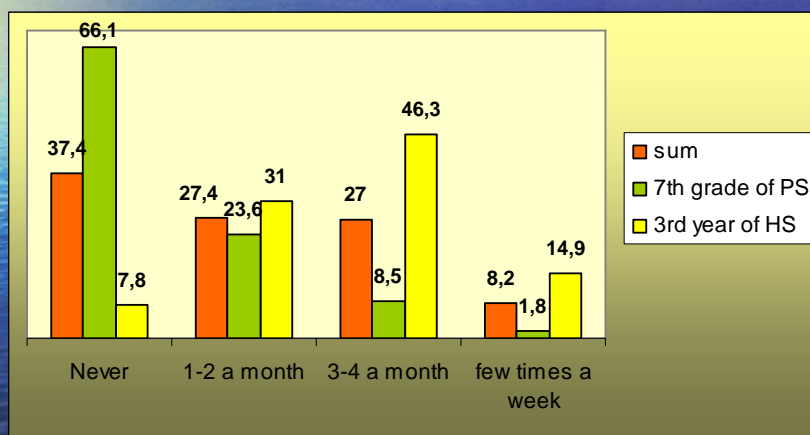


Table 4: When are you supposed to come home during weekdays?
(in %)

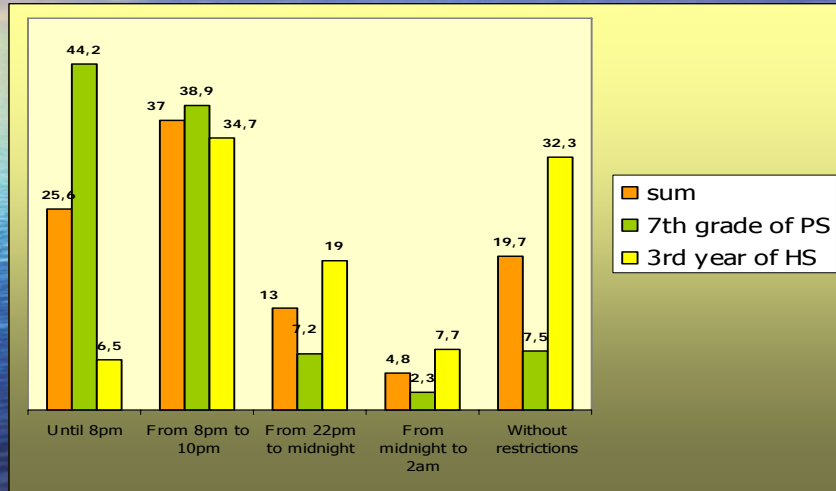
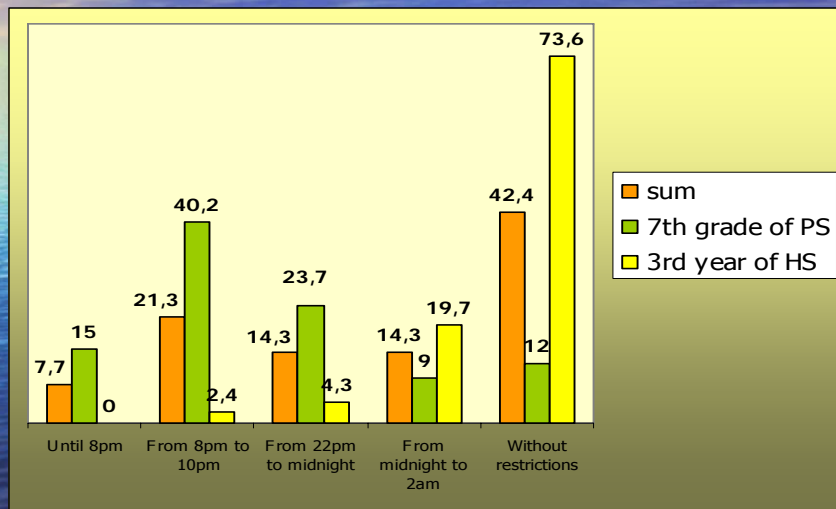


Table 5: When are you supposed to come home during weekends?
(in %)



II. Youth and Substance Use

Table 6: Have you ever tried alcoholic beverages?
(in %)

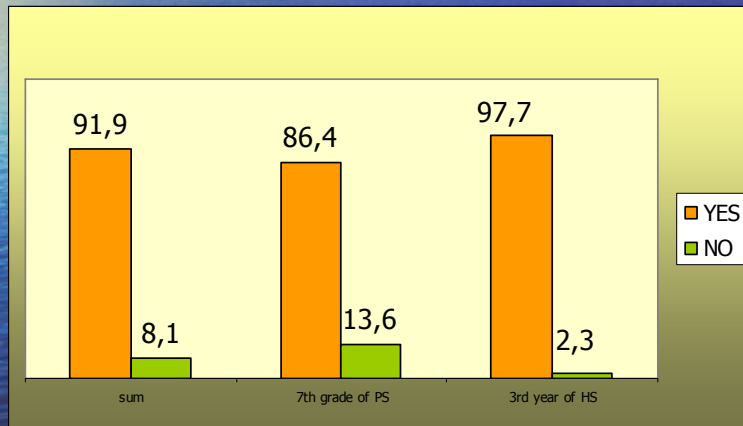


Table 7: How often have you been drunk
(in %)

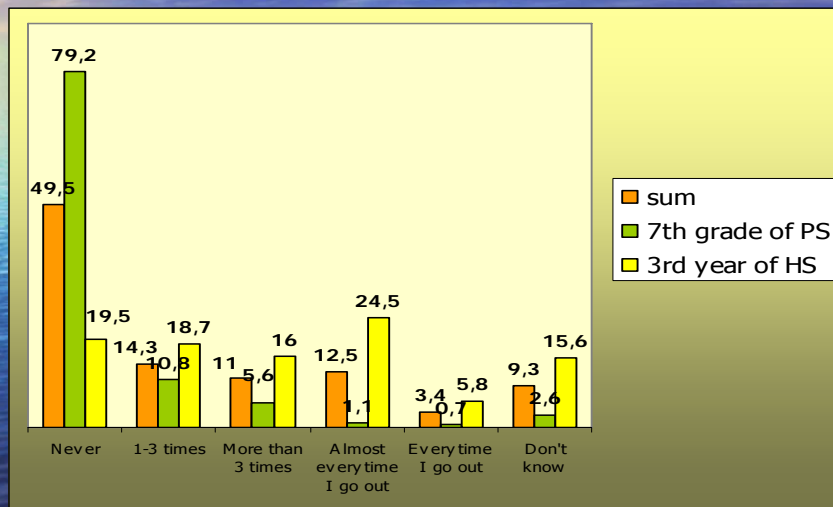


Table 8: Do you smoke?
(in %)

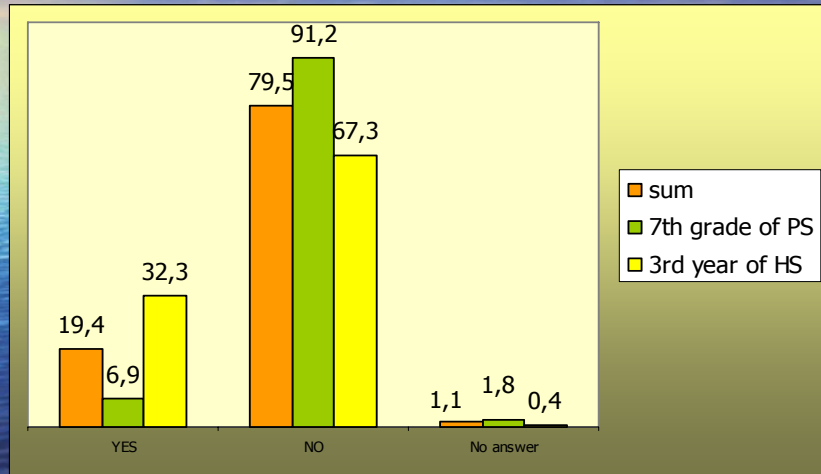
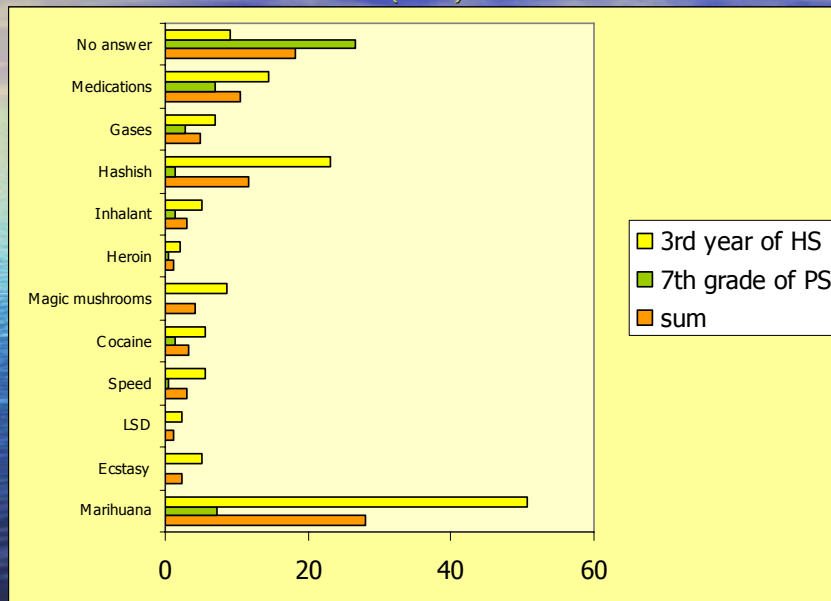


Table 9: Have you ever tried any of the following drugs?
(in %)



Reasons for the use of drugs:

Table 10: Curiosity (in %)

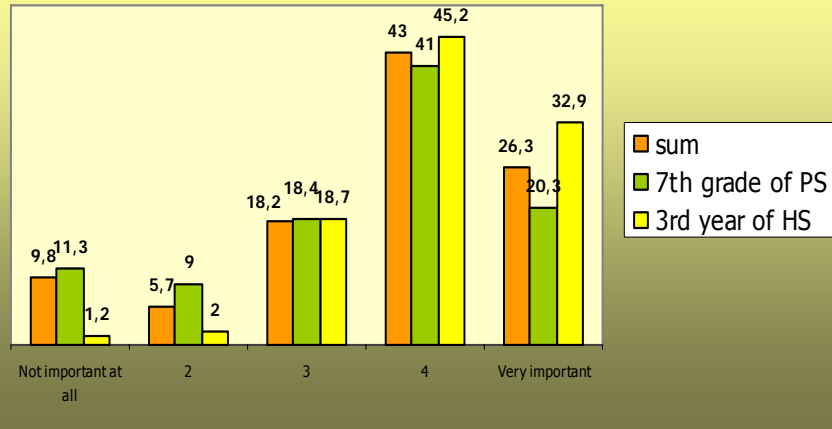


Table 11: Yearning to experience something special (in %)

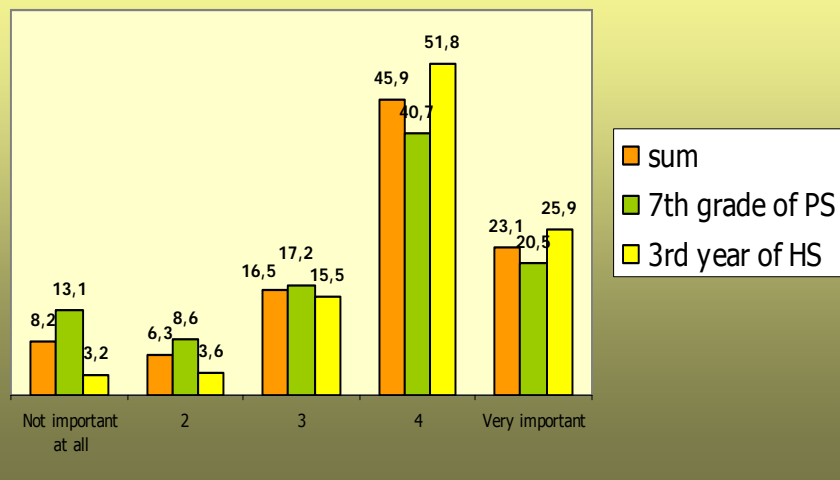


Table 12: It makes you forget all the problems (in %)

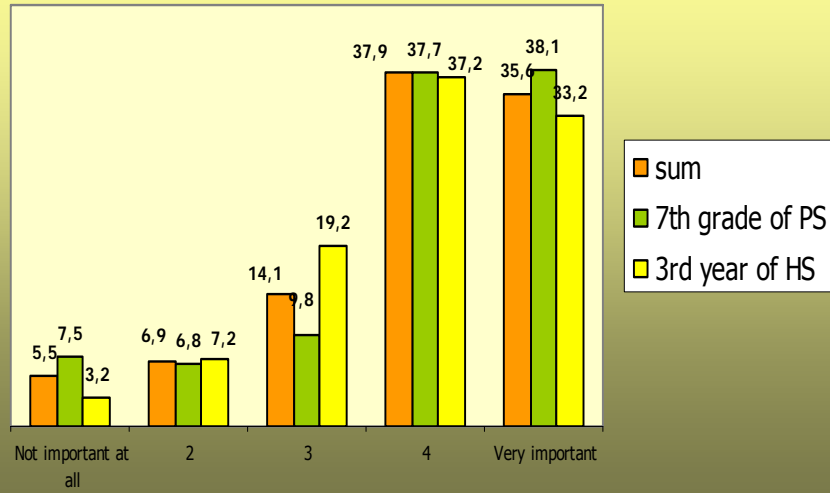


Table 13: Relaxation (in %)

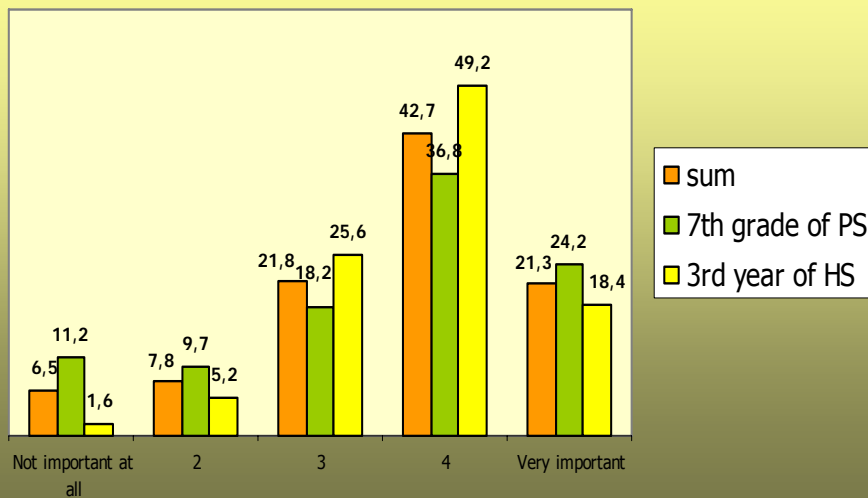


Table 14: Boredom (in %)

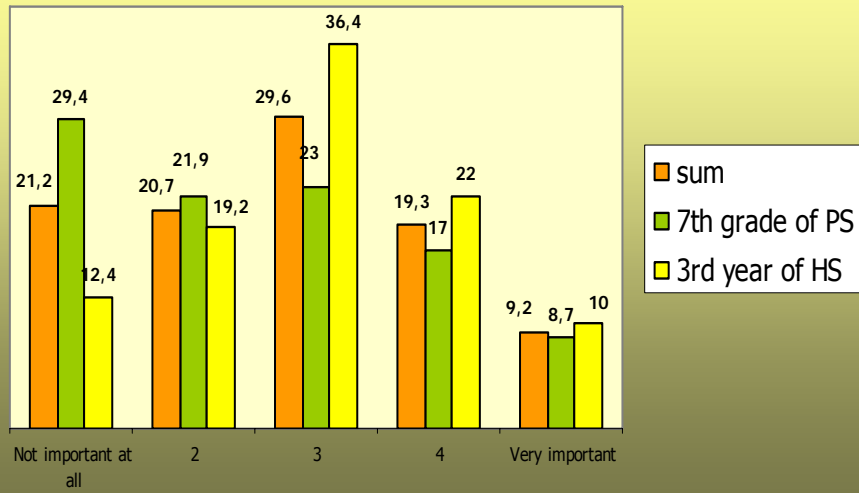


Table 15: weight loss (in %)

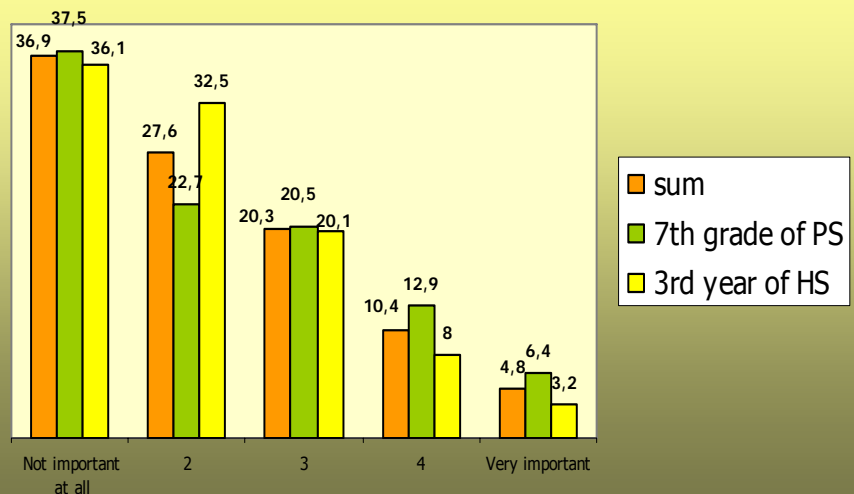


Table 16: To impress my friends (in %)

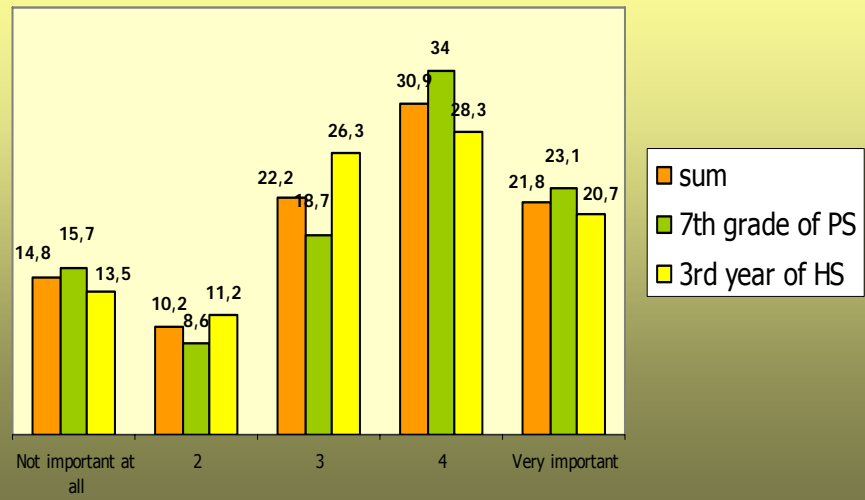
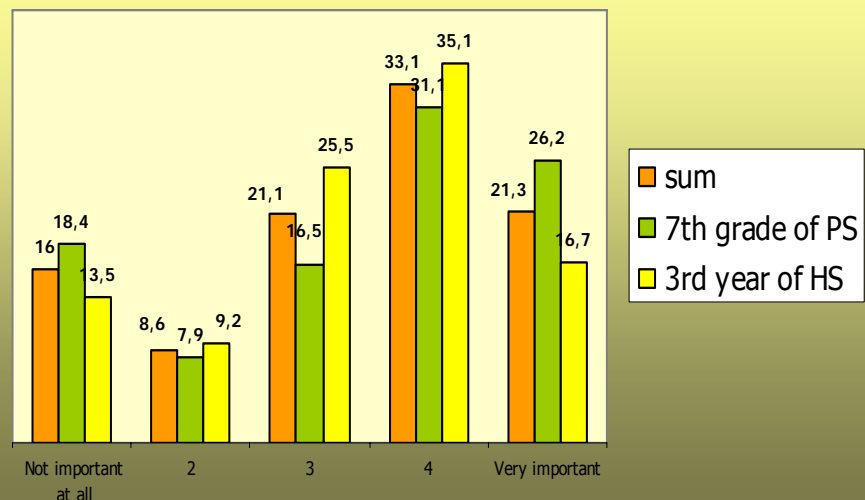


Table 17: Sadness (in %)



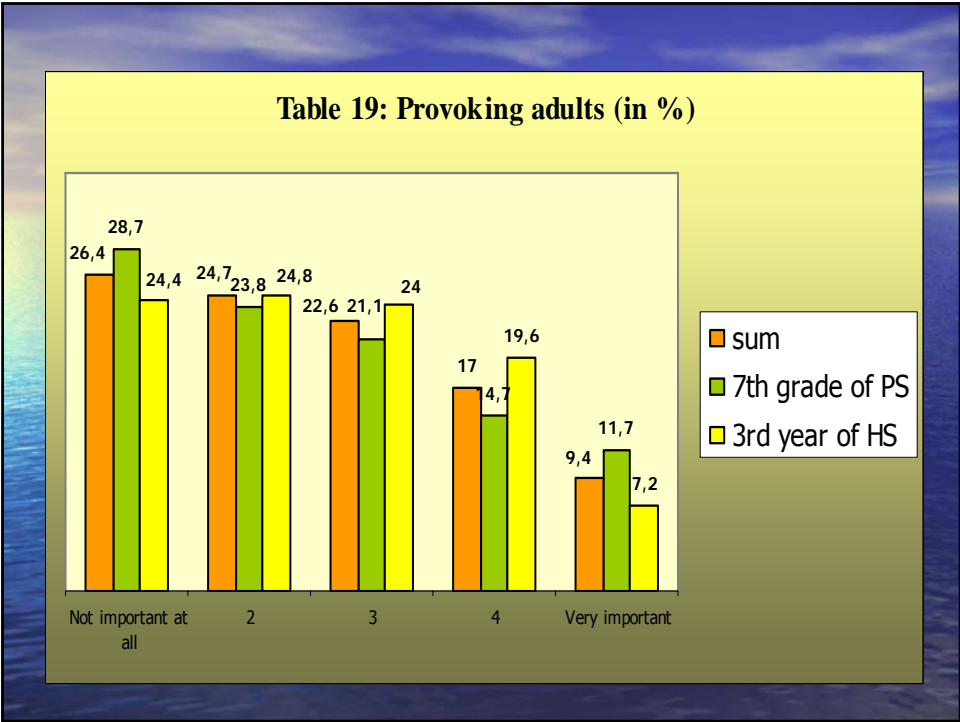
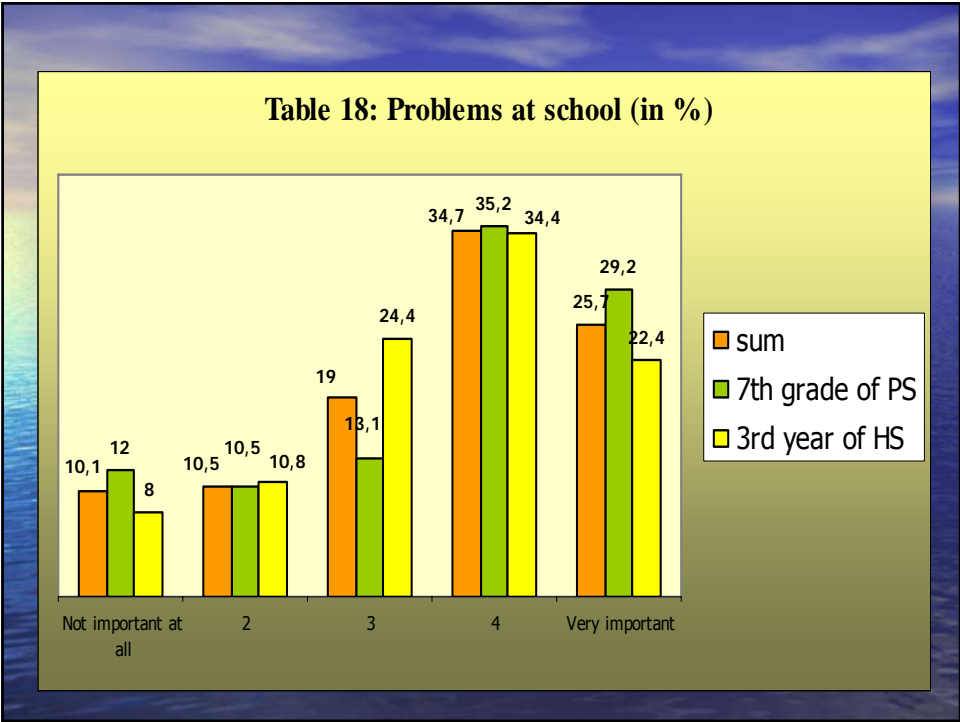


Table 20: To have even more fun (in %)

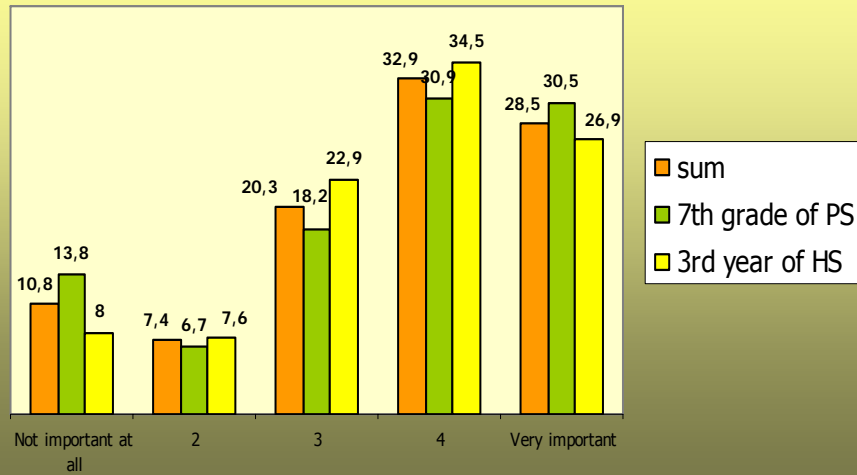


Table 21: How many persons who use marihuana do you know? (in %)



Table 22: How many persons who use ecstasy do you know?
(in%)

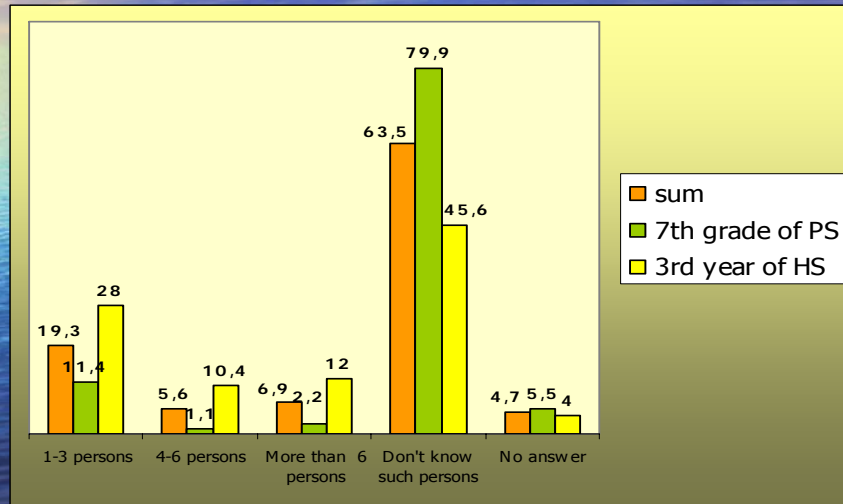


Table 23: How many persons who use LSD do you know?
(in %)

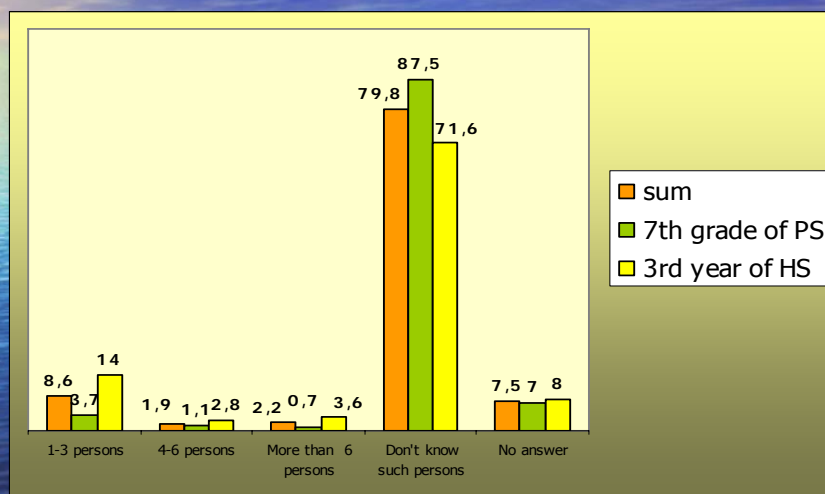


Table 24: How many persons who use speed do you know?
(in %)

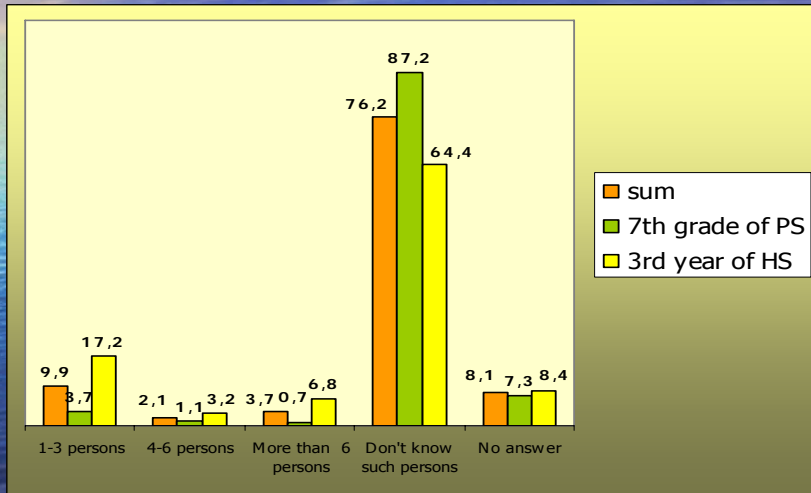


Table 25: How many persons who use cocaine do you know?
(in %)

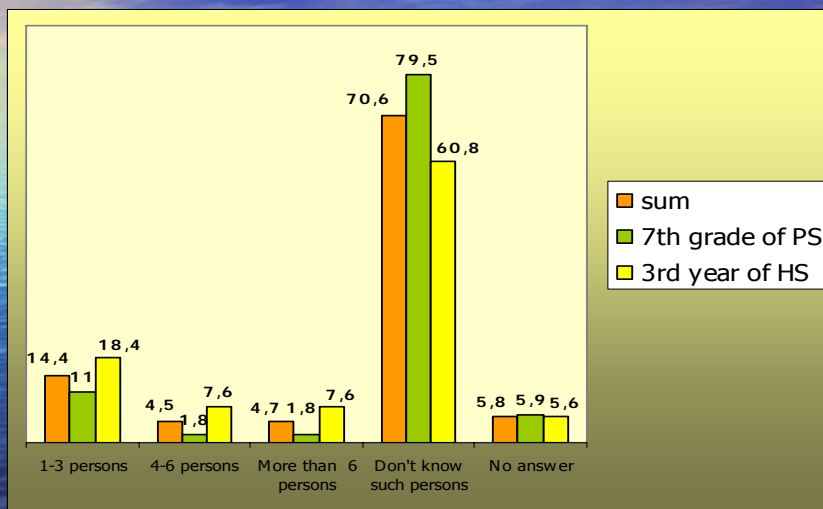


Table 26: How many persons who use heroin do you know' (in%)

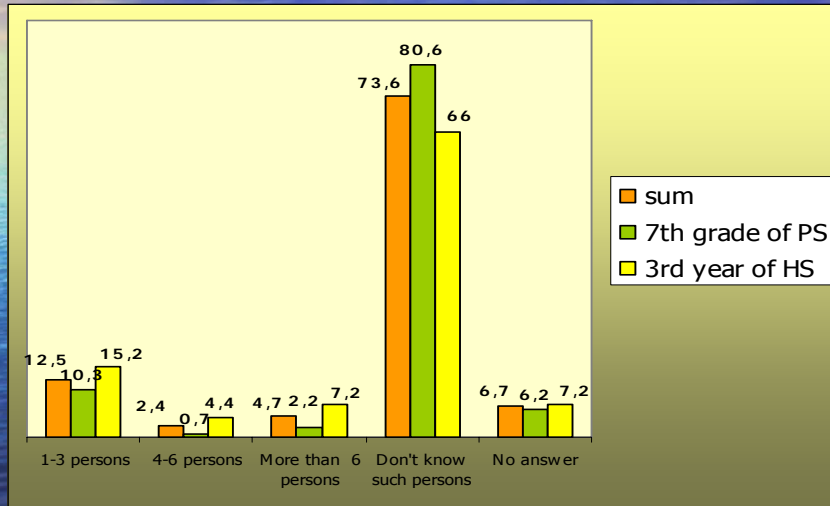
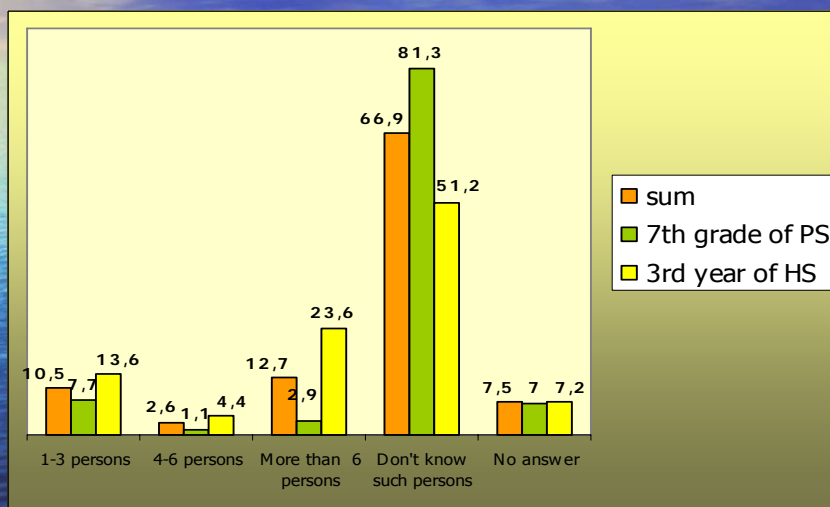


Table 27: How many persons who use hashish do you know? (in %)



Basic findings:

- Young people who regularly visit night clubs and have less restrictions on when to come home (less parental control) during weekdays and weekends are more likely to smoke, drink alcoholic beverages and consume (il)legal substances.
- 28,5 % of all respondents who report no restrictions on when to come home during weekdays/ends declare they are drunk almost every time they go out with their friends.
- 31,6 % of all respondents who report no restrictions on when to come home during weekdays/ends declare (that) they smoke. Less restrictions they have more likely it is they would smoke.

- Respondents who report less parental control are more likely to (ab)use (il)legal substances (the later they are supposed to be back home the bigger the probability to use (il)legal drugs).
- None of the respondents who declare they should be home before midnight have ever tried ecstasy, magic mushrooms, speed, LSD, cocaine or heroin.
- Substances which are not declared illegal (medications, inhalants) and are easily attainable are more likely to be (ab)used by younger respondents (7th graders).

- One of the most important factors influencing risk behaviour is the **perception of personal happiness and family happiness**. Young people who declare they are not satisfied with themselves and with relations within the family are more likely to drink alcohol and use (il)legal drugs.